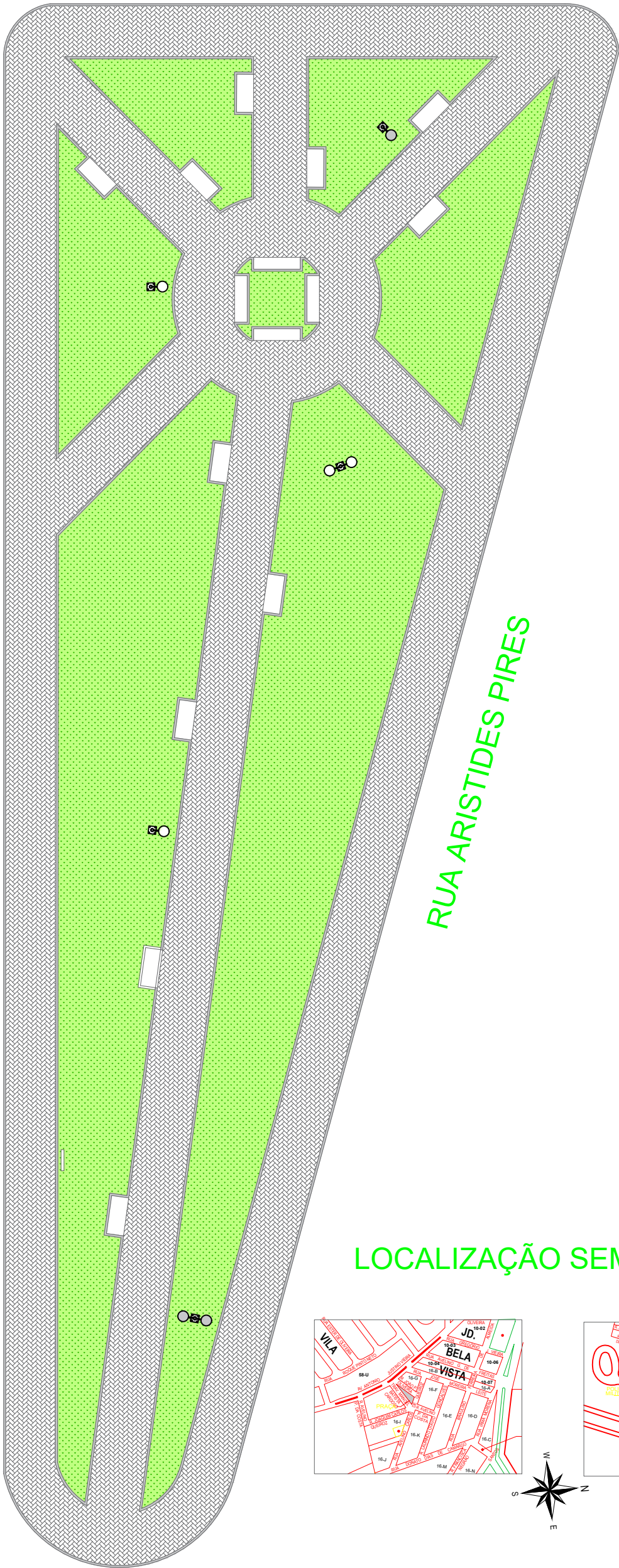


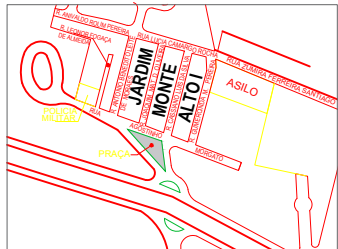
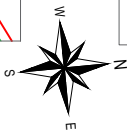
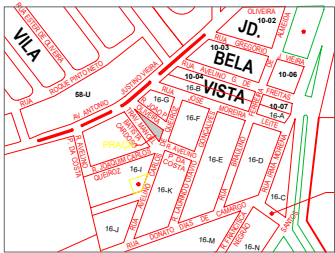
R. AGOSTINHO MORGATO

RUA ARISTIDES PIRES



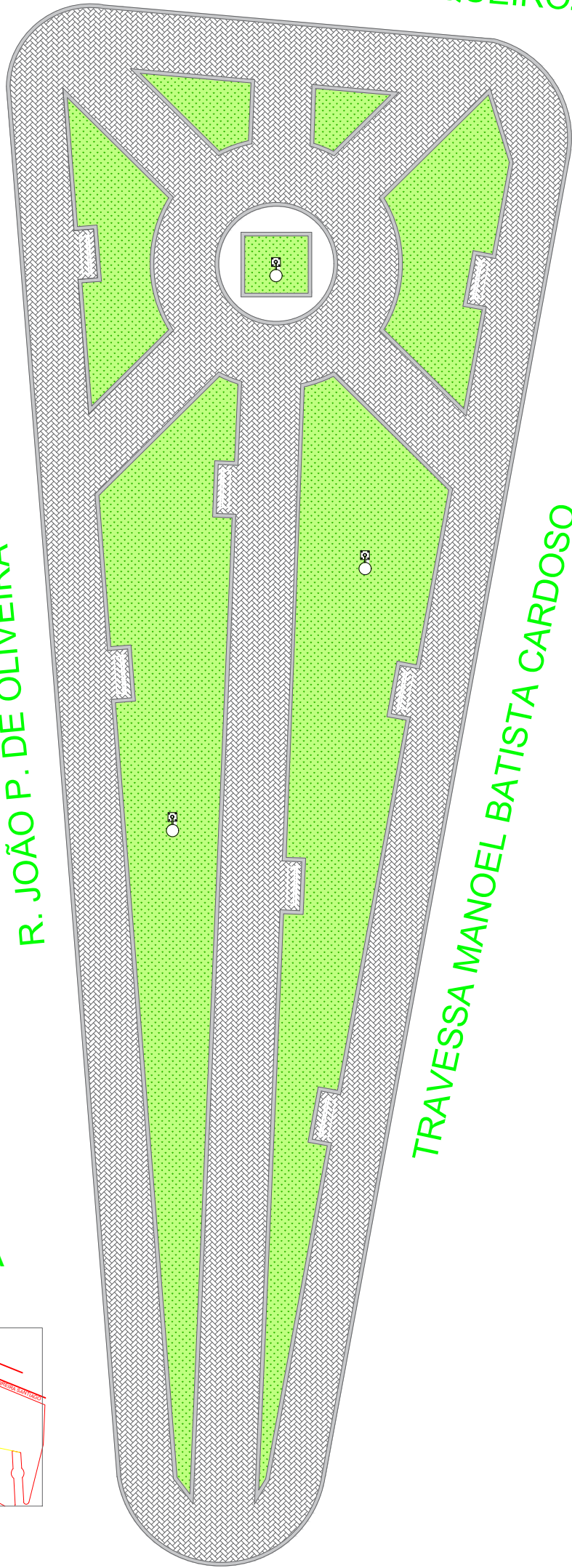
RUA ARISTIDES PIRES

LOCALIZAÇÃO SEM ESCALA



PLANTA PRAÇA JD. MONTE ALTO
ESCALA 1/200

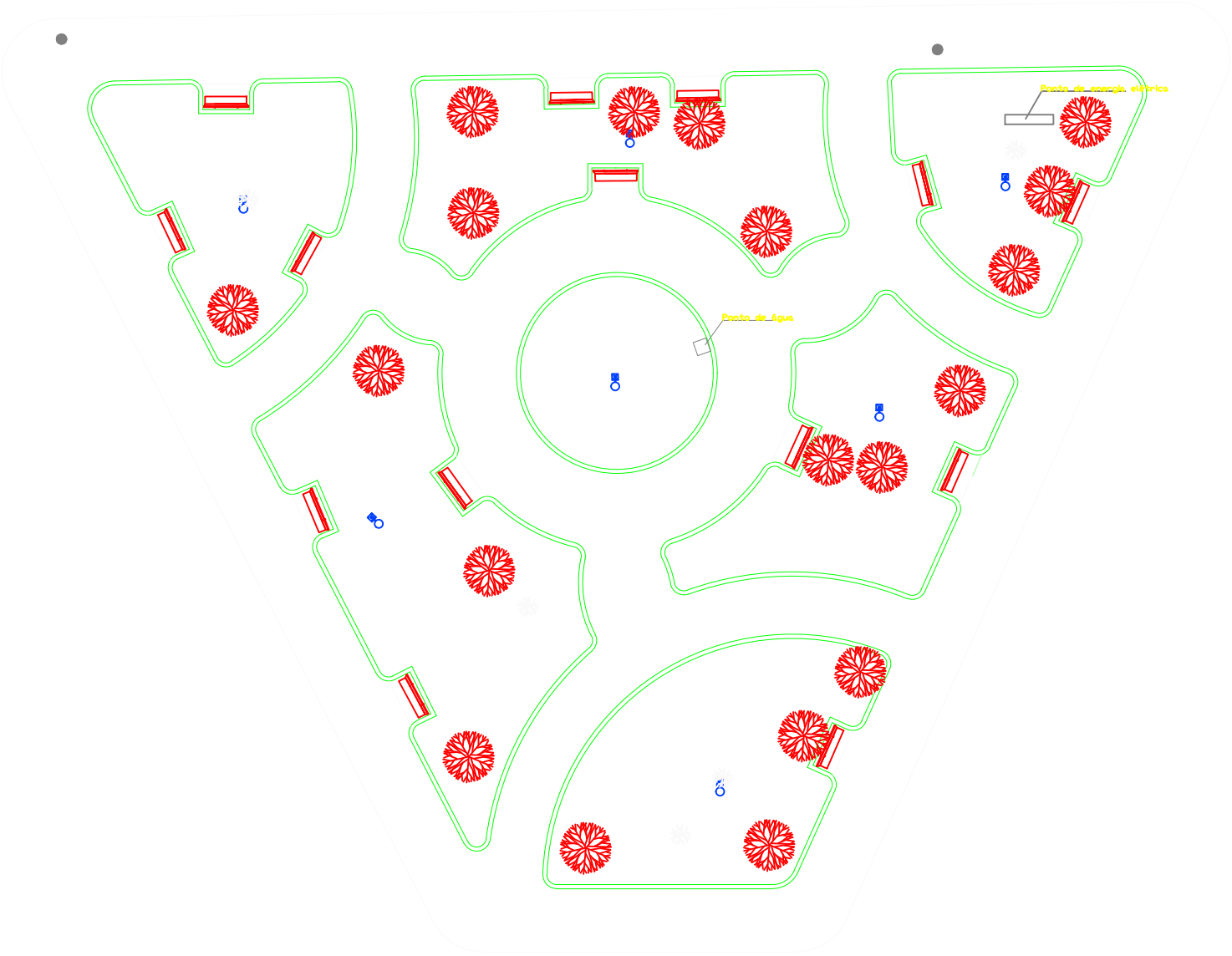
R. AVELINO CARLOS DE QUEIROZ



TRAVESSA MANOEL BATISTA CARDOSO

PLANTA PRAÇA JD. PLANALTO
ESCALA 1/200

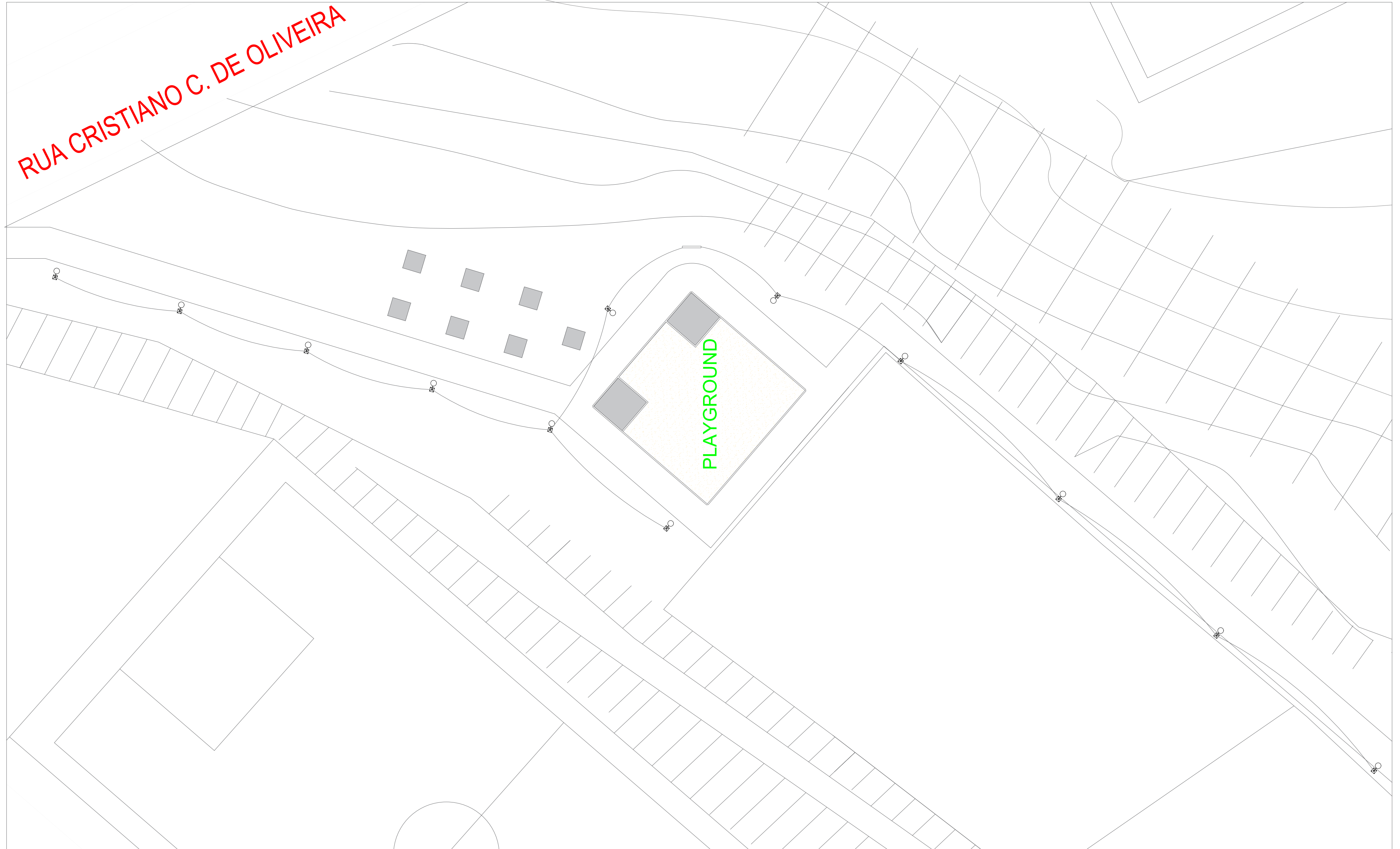
Rua Honorato Valerio da Silveira



Rua Paulo Vieira Diniz

RUA CRISTIANO C. DE OLIVEIRA

PLAYGROUND



RUA 05 ATUAL JOÃO ALVES DA CUNHA

CAIXA D'ÁGUA
SABESP

RUA 12 ATUAL JOÃO DOS SANTOS

PLAYGROUND

RUA 11 ATUAL FRANCISCO DE ALMEIDA LARA

RUA 06 ATUAL AV. PRIMO CRISTIANO DE MELLO